

# Thermo Scientific SampleManager LIMS™ 10

Connected Productivity™: Helping You Build the Safest Products, Using the Most Sustainable Processes, While Delivering Superior Value to All Your Stakeholders

Whether your business is in Life Sciences or Food & Beverage, Oil & Gas or PetroChemicals, Environmental or Water & Wastewater, Metals & Mining or Cement, Power & Utilities or Chemicals, we are all facing the same fundamental business issues.

- How do we deliver the safest products on a global basis – using standardized processes, meeting regulatory guidelines, ensuring worker safety and monitoring quality through the entire supply chain?
- How do we employ the most sustainable processes in our business – reducing energy usage, reducing waste and employing more automation?
- How do we do all this and still remain profitable – making better use of all our resources, having more harmonized processes, mitigating risks while continuously looking for process improvements?

It is not enough to just do the things listed here. You also need systems to continuously track, monitor, measure, analyze and

**For Lab Managers and Users – Built-in functionality delivers improved efficiency, compliance and resource management**  
Sample Point Scheduler, Label Designer, Report Designer, Instrument Templates, Location Hierarchy, Measurement Traceability, Operator Training, Stock Management, Multi-Lingual Support

**For IT and Systems Administration – New .NET development environment for rapid prototyping and easier integration**  
Multiple localization overlays, sophisticated user interfaces using new Form Designer, Integration Manager support, continuous upgrade path lets you retain existing customizations

**For Management – State-of-the-art data visualization tools to monitor and measure performance against key metrics**  
Dashboards to track energy usage, waste reduction, resource utilization, standards compliance, lot traceability, hot spot alerts, production levels, quality parameters, geographical mapping

report on all of these activities as well. This is where Thermo Scientific SampleManager LIMS comes in. It is already the most widely deployed LIMS around the world and with Version 10 we are adding a host of new functionality that will be invaluable to your users, your IT staff and your senior management.

### Designed to Deliver Connected Productivity

As the industry's leading laboratory information management system, SampleManager LIMS is your gateway to connecting your lab with the enterprise to help you make faster, more informed decisions at all levels of the organization. SampleManager 10 reflects the collective knowledge and experience of our customers and successive version releases. This feature-rich release has been developed with dashboard functionality that addresses the critical business and operating needs of three distinct but interrelated parts of your company's infrastructure - your lab personnel, your IT and systems administrators, and your management. Innovative SampleManager 10 delivers:

- Groundbreaking new functionality for laboratory personnel
- A comprehensive .NET tool kit for systems administrators and IT professionals
- More interactive and more visually oriented information for management.

#### Key Words

- Continuous Upgrade Path
- .NET Tool Kit
- Location Hierarchy
- Data Visualization
- Sample Point Scheduling
- Instrument Management
- Training Records
- Report Designer
- Label Designer
- Stocks and Suppliers
- Form Designer
- Multi-Lingual Support

### SampleManager 10 Key Features



Figure 1. SampleManager 10 significantly increases user productivity with major new features.

## Substances

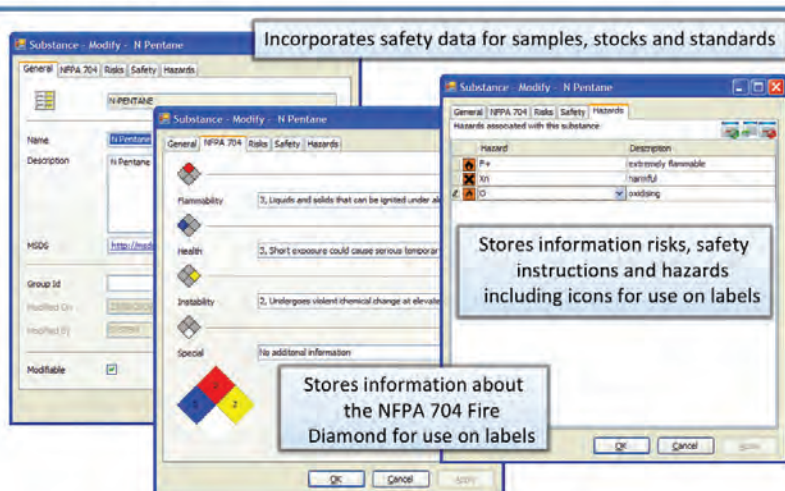


Figure 2. Substances fully describe the properties of materials routinely handled within the laboratory to enhance personnel safety.

## Standard Dashboards

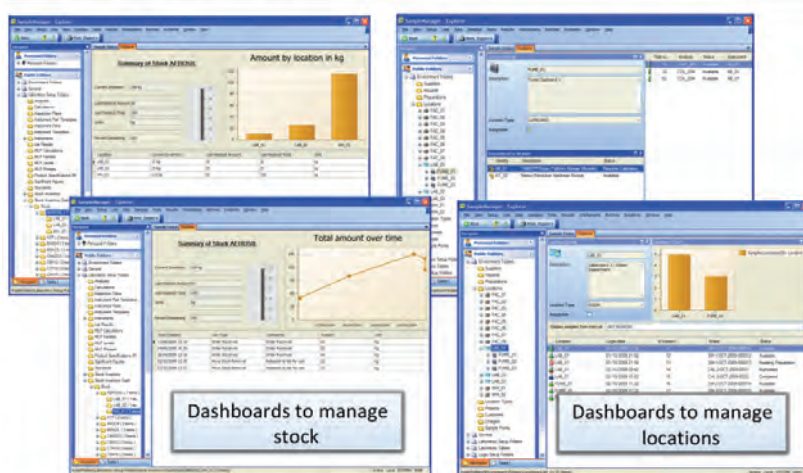


Figure 3. Dashboards enable monitoring of stocks, locations, instruments and other laboratory entities to assist in planning, purchasing and scheduling.

## Report and Label Design

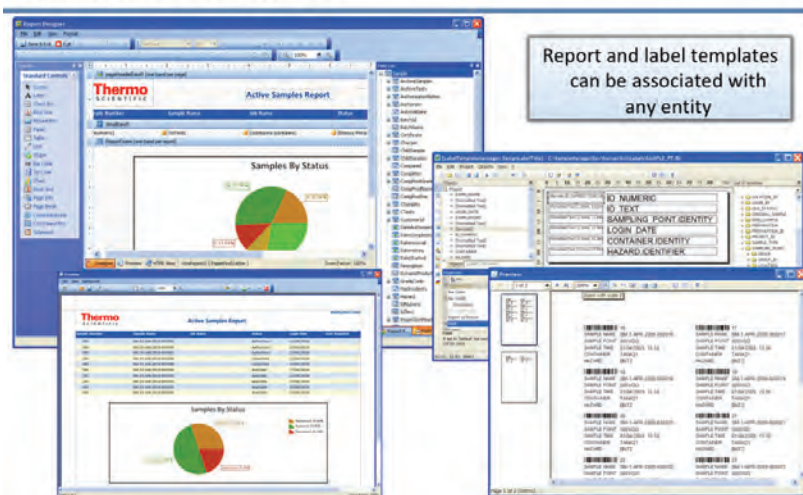


Figure 4. Integrated Report and Label Designers are fully aware of the SampleManager data model making it easier and quicker to generate report and label templates.

We've built SampleManager 10 so that your business can benefit from more connectedness and a higher level of enterprise integration. With SampleManager 10 delivering the right information to the right people at the right time, decision making at any level of your business will be enhanced by Connected Productivity.

### Lab Managers and Users: Optimized Lab Operations with Enhanced Traceability

Laboratory managers are under increasing pressure to maximize utilization of their software investments to gain better efficiencies in the lab and minimize time-consuming manual processes. For LIMS users, SampleManager 10 delivers an extensive set of new built-in functionality that delivers significant productivity gains by automating time-consuming activities (Fig. 1). For example, SampleManager's comprehensive materials safety handling capabilities (Fig. 2) stores critical safety information for proper handling of substances, and stock and inventory management dashboards provide visibility of laboratory consumables such as solvents, reagents and disposables, giving you tighter control and saving you time in routine ordering (Fig. 3). Enhanced compliance features tie instrument and operator information to calibration samples and results so that instrument configuration and state, along with operator name and training level, can be automatically rendered. Without relying on IT, you can now create your own reports and labels (Fig. 4) giving you confidence you can produce a full audit trail for regulatory requirements such as ISO, FDA and GAMP. While compliance requirements are automatically monitored and tracked, throughput, quality and lab productivity are also improved, which allows lab managers to focus on value-added activities.

### Systems and IT Administration: Easier Configuration and Workflow Creation

Successful deployment of an enterprise level informatics solution is reliant on a product that can be easily deployed, configured and maintained by systems administrators and IT

## Form Designer

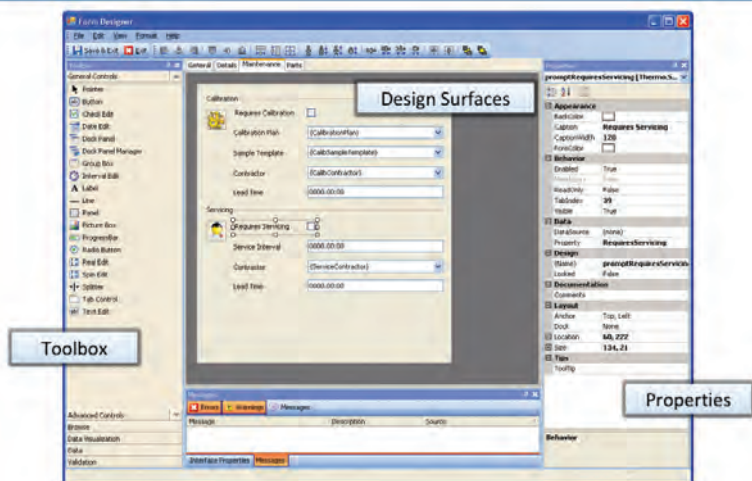


Figure 5. Form Designer provides simple .NET screen and dashboard design tools making user interfaces extensible for each implementation.

personnel. SampleManager 10, built on Microsoft .NET, provides the most comprehensive and intuitive development tool kit for making system extensibility simple and delivering the time and cost savings critical to process sustainability. Furthermore, rapid prototype development functionality allows for changing workflow definitions as your business requires. With no proprietary code required (Fig. 5), SampleManager's new configuration environment provides over 60 drag and drop controls that administrators can use to easily create dashboards, data entry forms and functional user interfaces, which can then be deployed across the entire organization, or built specifically for a particular location, operator or lab responsibility. Both management and lab personnel are able to access data in the format best suited to their needs (Fig. 6), in their own language.

## Management: Driving Decisions with Key Business Metrics

An informatics investment is a more critical component of your laboratory and enterprise systems strategy than ever before. SampleManager 10 delivers the tools and functionality necessary to integrate and connect all parts of the organization so that management and user decisions are more responsive and more informed. Management is continuously seeking more information that can add real value to decision making. That means drawing on all sources of data across the enterprise in real-time and having the flexibility to view that data in appropriate formats that reflect key business metrics. SampleManager 10 delivers Connected Productivity to your organization with intuitive and personalized interactive management dashboards and reports.

Now you can gather, review and quickly drill down on real-time data in a dynamic environment, with interactive graphs, charts, tables, maps and many other data mining tools (Fig. 7). SampleManager's enhanced dashboard design delivers more knowledge to management and helps you quickly monitor the health of your lab and the business (Fig. 8).

## Localization: Multiple Languages

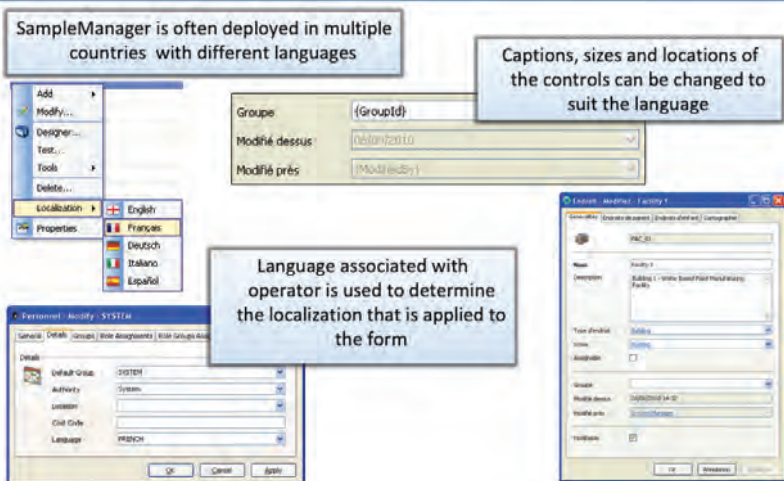


Figure 6. SampleManager 10 facilitates enterprise deployments and user acceptance by offering multilingual support so employees can view their work in their own language.

## Explorer Forms

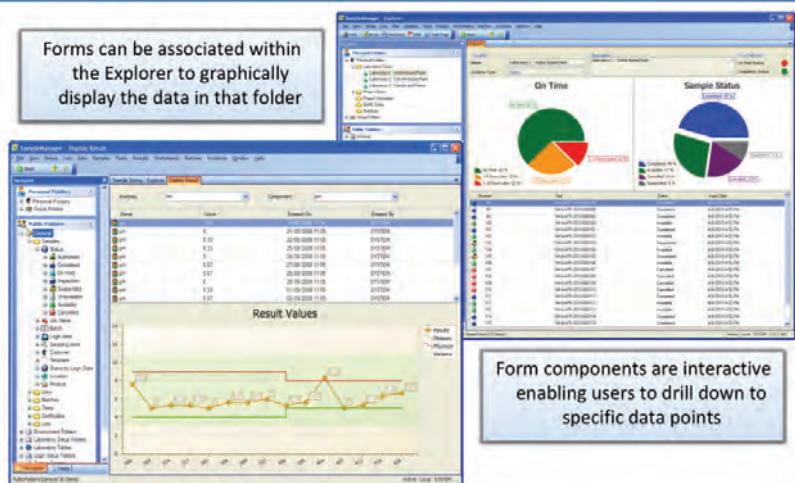


Figure 7. Interactive forms can be defined against Explorer Folders to represent the folder contents in appropriate formats to rapidly provide key information and understanding.

## Emissions Monitoring View

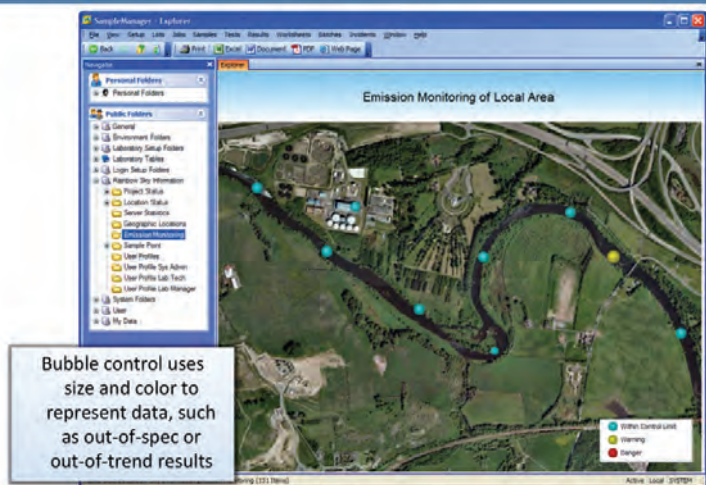


Figure 8. Data can be displayed pictorially giving a rapid indication of critical process parameters.

### Improved Productivity Across the Enterprise

SampleManager 10 delivers an extensive range of standard new features that will give lab personnel more time to focus on science, improve lab productivity and give you greater confidence to meet compliance and regulatory requirements. Standard features include: sample point scheduling (Fig. 9), operator training records, instrument calibration, servicing and maintenance, as well as stock and lab consumables. SampleManager 10 is built on the .NET platform and

designed with an intuitive development tool kit for making system extensibility and workflow creation simple, reducing time and resources needed to configure the LIMS.

SampleManager LIMS, the most widely deployed industrial LIMS in the world, is unique in its delivery of version releases that are built upon collective user experiences and industry knowledge. Each new release of SampleManager ensures an upgrade path that respects your previous investment and reflects continuous customer input. Now SampleManager

allows you to take advantage of that collected industry knowledge and move your lab and your business closer to Connected Productivity – the most effective position from which to improve enterprise efficiencies and generate more information which reflects key business metrics.

### For Maximized Functionality and Business Continuity, Make the Move to SampleManager 10

Take advantage of the tools and functionality that represent the most significant advances in QA/QC informatics in the last decade. The largest services organization in the industry is ready to help you make the move to SampleManager 10 and to experience for the first time a new kind of Connected Productivity.

SampleManager 10 will change the way you do business. With its extensive built-in features, intuitive and user-friendly administrator's tool kit, enhanced user controls, improved usability, and fully interactive dashboards, SampleManager will help you build the safest products, using the most sustainable processes, while delivering superior value to all your stakeholders. Now is the time to introduce your business to the enterprise connectivity that improves your efficiencies, processes, the way you view your data and how you make decisions. The move to SampleManager 10 is the most important investment you can make in your lab – and for your business. See why the most widely deployed LIMS in the industry continues to deliver the most functionality with the lowest cost of ownership and take advantage of a new kind of Connected Productivity.

### For More Information

Visit us on the web at [www.thermoscientific.com/informatics](http://www.thermoscientific.com/informatics)  
Or you can email us at [marketing.informatics@thermofisher.com](mailto:marketing.informatics@thermofisher.com)

## Sample Point Scheduling

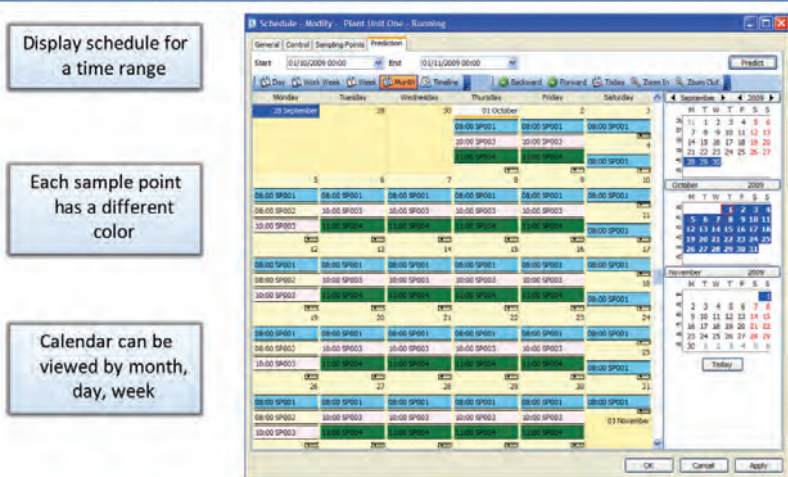


Figure 9. Sample schedules for groups of sample points can be managed using a logical calendar view to allow easier set up, monitoring and compliance.

In addition to these offices, Thermo Fisher Scientific maintains a network of representative organizations throughout the world.

#### Australia/Asia Pacific

+61 8 8208 8200

#### China

+86 800 810 5118

#### France

+33 160924800

#### Germany/Eastern Europe

+49 6103 408 1110

#### India

+91 22 6742 94 94

#### Latin America and the Caribbean

+1 781 933 4689

#### Netherlands/Benelux

+31 76 579 5555

#### Spain/Portugal

+34 914 845 965

#### United Kingdom

+44 1619423000

#### USA/North America

+1 800 395 5467