

Count on Thermo Scientific  
SampleManager LIMS to reduce  
costs, increase productivity and  
ensure superior product quality.

## Thermo Scientific SampleManager LIMS™

The Flagship LIMS for Process Industries



### Challenge

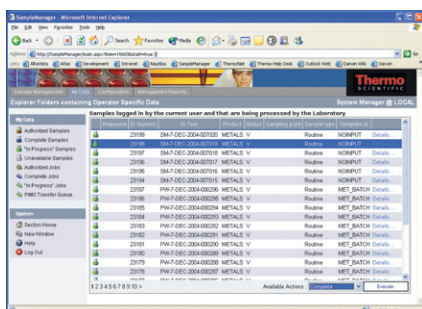
Industrial Laboratory Information Management Systems (LIMS) are an important component of a comprehensive quality management solution that often includes Process Information Management Systems (PIMS), Manufacturing Execution Systems (MES) and Enterprise Resource Planning (ERP), which continuously monitor and control the plant processes from raw materials through to monitoring and execution of production. The LIMS – which stores product quality data – generally operates independent of the other systems. LIMS provide the data for the final quality assignment of the batch that has been produced, as well as hold the off-line quality results collected throughout the manufacturing process. Therein lies the problem. Companies contend with separate islands of information, resulting in inefficient data management and decision-making.

Today, companies need a LIMS with greater flexibility and ability to meet the needs of the broader organization. An ideal LIMS is one that serves as an integrated platform capable of supporting key enterprise processes and systems. Enterprise LIMS include XML web services for open communication with lab and enterprise applications, and client/server functionality for greater access to information and insight into data across the organization.

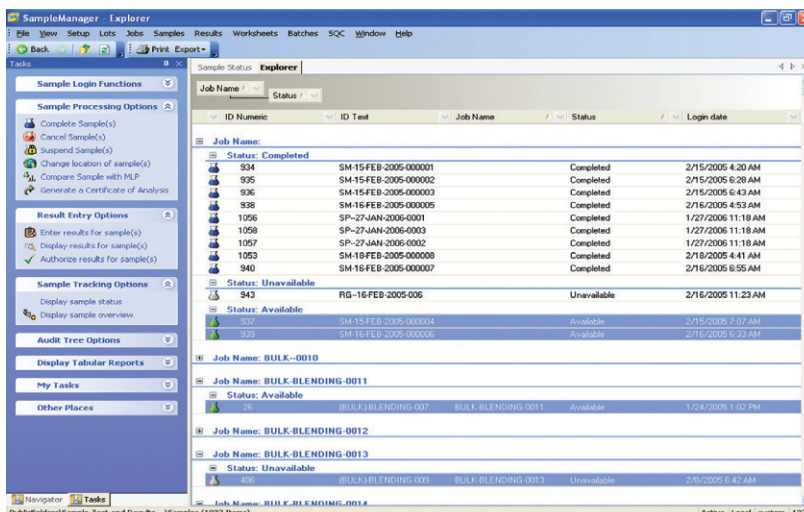
### Count on Thermo Scientific

SampleManager is the LIMS of choice for enterprises who are seeking process harmonization and increased productivity. It can be implemented in one or multiple instances, is scalable for a large user base and is available in multiple languages. It is flexible and configurable to accommodate various workflows, lab types and user communities across the enterprise.

### Reviewing SampleManager data through the Web



## SampleManager LIMS



SampleManager's task-driven interface simplifies the user experience. Inductive sample processing, for example, tells the users which valid actions are available to them based on the data selected such as: complete, cancel, suspend, or change location.

Built on Microsoft® .NET, SampleManager integrates easily with other applications and instruments in and out of the lab, providing one standard user-interface and helping companies to enforce process standardization across multiple labs.

SampleManager includes a web browser interface for remote sample login, data access and reporting. Secure access to the LIMS data is available for laboratory staff, remote users and external customers. The web services interface allows the LIMS to be delivered as a network service that can be integrated using common Internet standards, such as ASP, XML, SOAP and HTTP. These industry standard tools help dramatically simplify and reduce the costs of integrating SampleManager with other laboratory and business systems. PIMS, MES and ERP may be integrated directly with SampleManager using its modular solutions to ensure a rapid deployment of the system.

### Lower Total Cost of Ownership

A global solution helps reduce the total cost of ownership. An independent study, commissioned by Thermo Fisher Scientific, confirms this. Enterprise LIMS reduce costs by centralizing and consolidating IT and technical support personnel. With one solution, IT departments can develop more knowledge of a particular LIMS to identify and solve problems faster, even anticipate them before they occur. This frees IT staff to focus on business activities.

An enterprise LIMS reduces downtime and increases productivity for the end-user. Lower costs can also be achieved in the areas of implementation, systems integration, upgrades, application development and training. In addition, standardization streamlines vendor relationships and improves purchasing power.

### Ensure Product Quality and Avoid Delays

With an enterprise LIMS companies can spot trends and monitor product quality more quickly and easily, dramatically improving their overall quality control process. An integrated approach results in better data flow, fewer redundant data, virtually no transcription errors and increased laboratory efficiency - all while maintaining the highest quality standards. Duplicate data and manual entry of sample requests and testing parameters are eliminated through instrument integration, directly feeding results from GCs and other instruments into SampleManager. SampleManager helps ensure accurate data flow between the lab and the rest of the organization. Having that data available to managers and decision-makers and propagating those decisions organization-wide leads to reduced production time and increased efficiency gains.

### Partnering with Thermo Fisher Scientific

Thermo Fisher Scientific is the worldwide leader in laboratory software and related services, providing enterprise-wide, multi-laboratory solutions that have become the corporate standard at leading organizations. Our LIMS and CDS control manufacturing quality data at many of the world's leading process companies. To support our global customers, we provide implementation, training, maintenance and support from the industry's largest worldwide informatics services network.

SampleManager is the flagship LIMS in Thermo Scientific's comprehensive portfolio of software solutions, including Atlas CDS™, a leading chromatography data system that integrates tightly with SampleManager.

### For More Information

Visit us on the web at [www.thermo.com/informatics](http://www.thermo.com/informatics) or call +1 866 463 6522 (US) or +44 161 942 3000 (Intl).